

REGIONE BASILICATA

Piano di Protezione Civile

COMUNE di POMARICO



Elaborato
6c

Rischio di incendio interfaccia

Scala

I Redattori



dott. ing. Orazio VALENTE

dott. ing. Sergio ZACCAGNINO

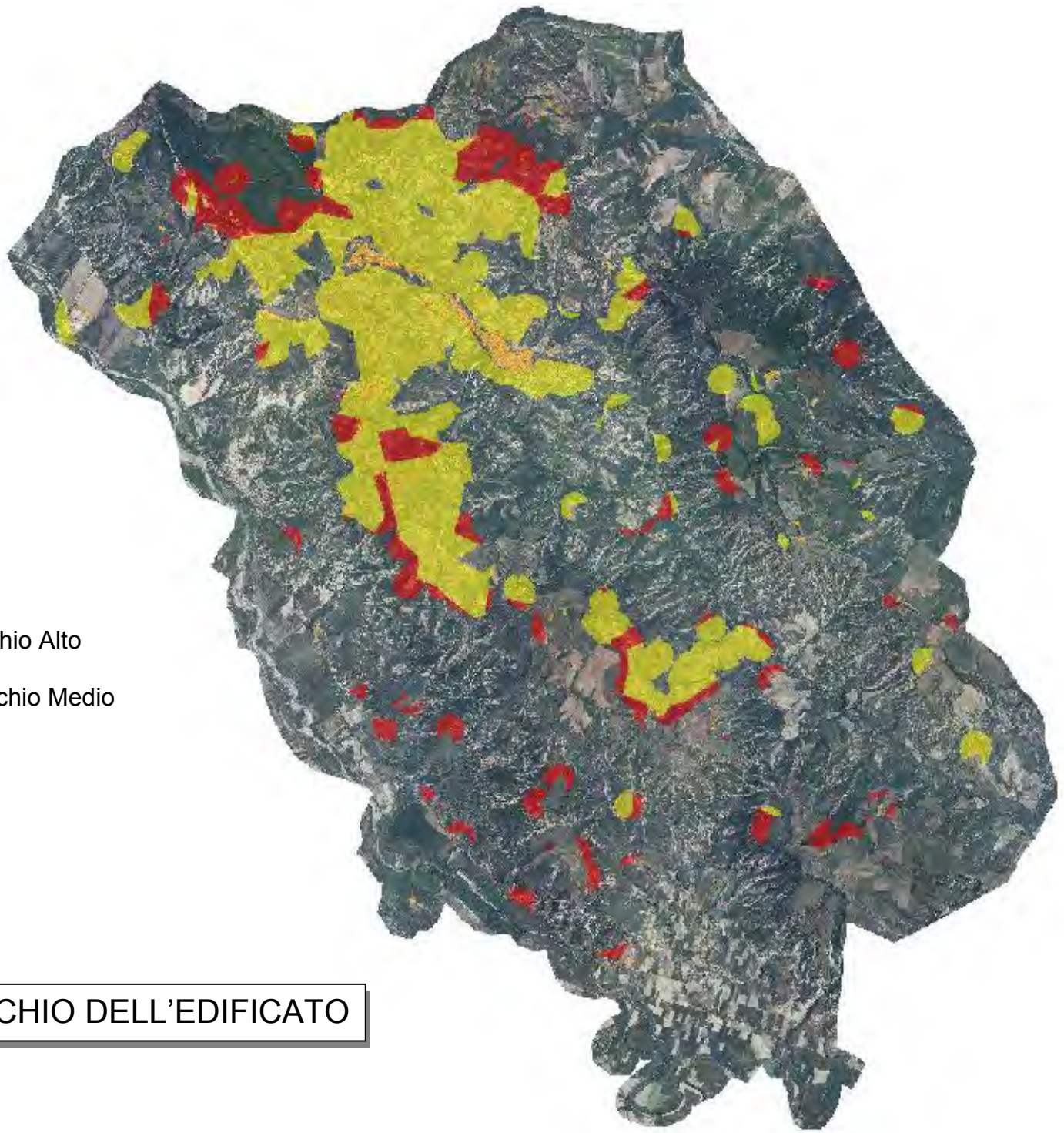
il Sindaco:
dott. Giuseppe CASOLARO



il Responsabile:
arch. Giacomo A. PIGNATELLI

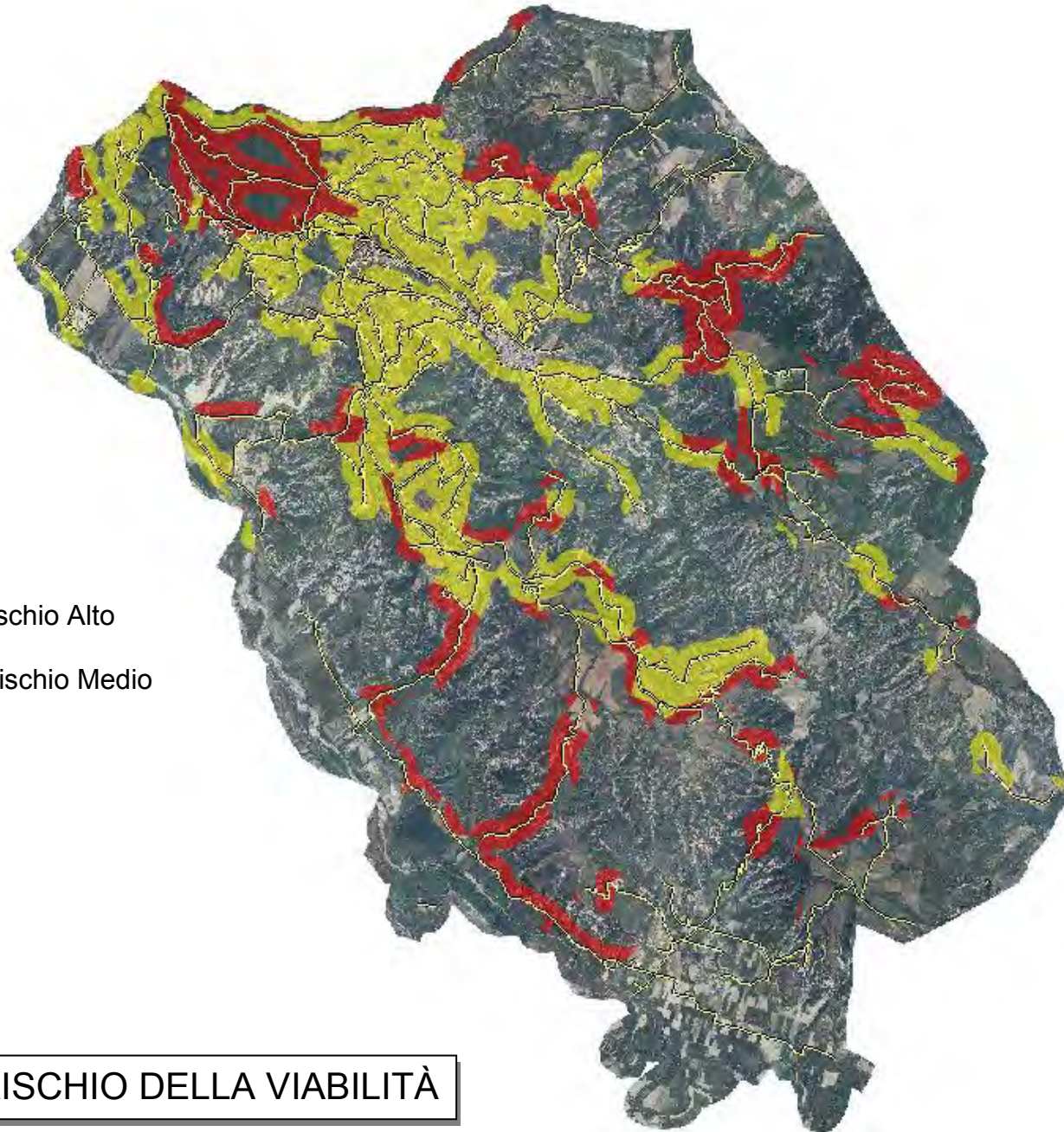
REV.	DATA	DESCRIZIONE
00	dicembre 2010	EMISSIONE

-  Rischio Alto
-  Rischio Medio

ANALISI DEL RISCHIO DELL'EDIFICATO



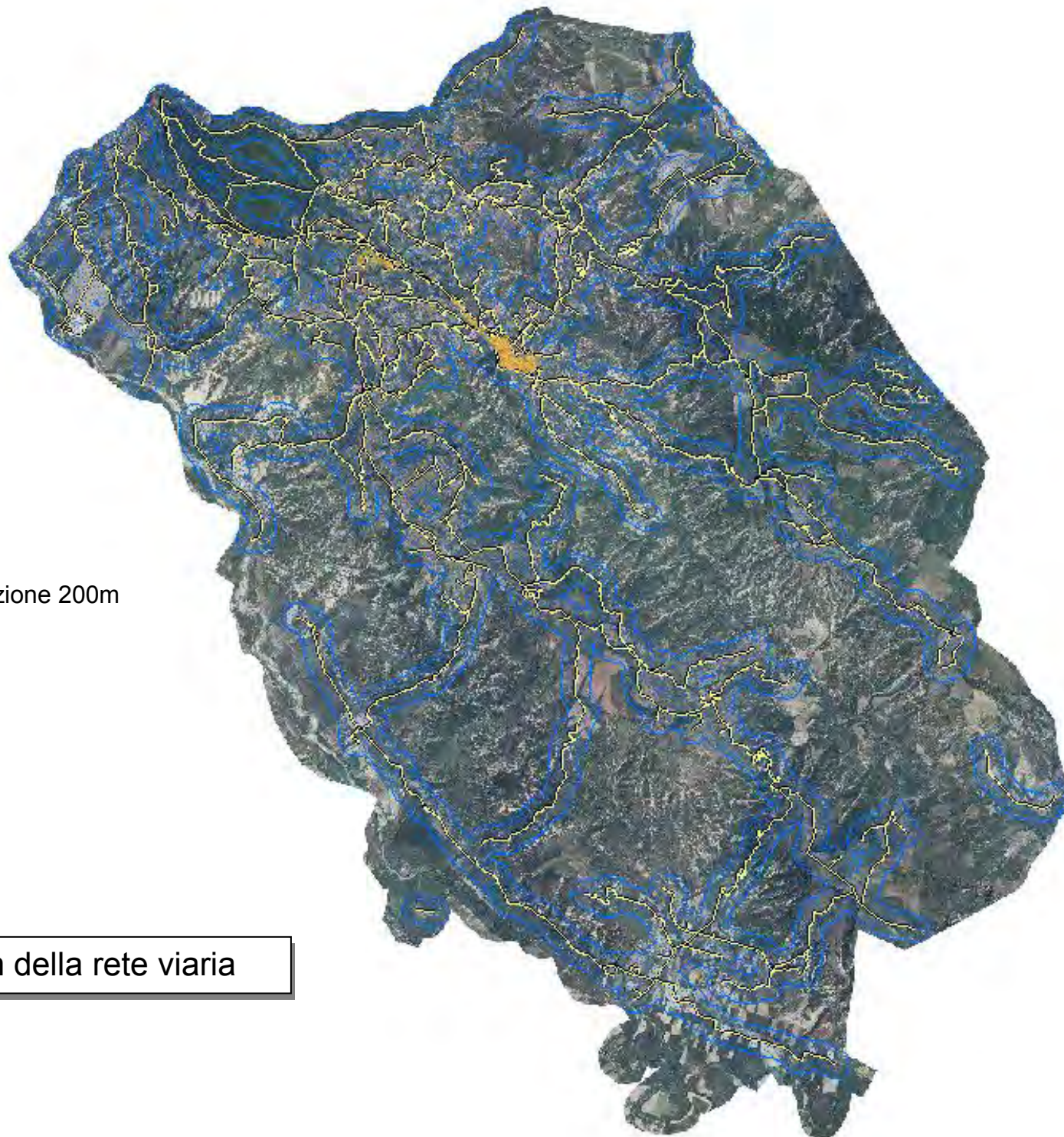
-  Rischio Alto
-  Rischio Medio

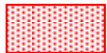



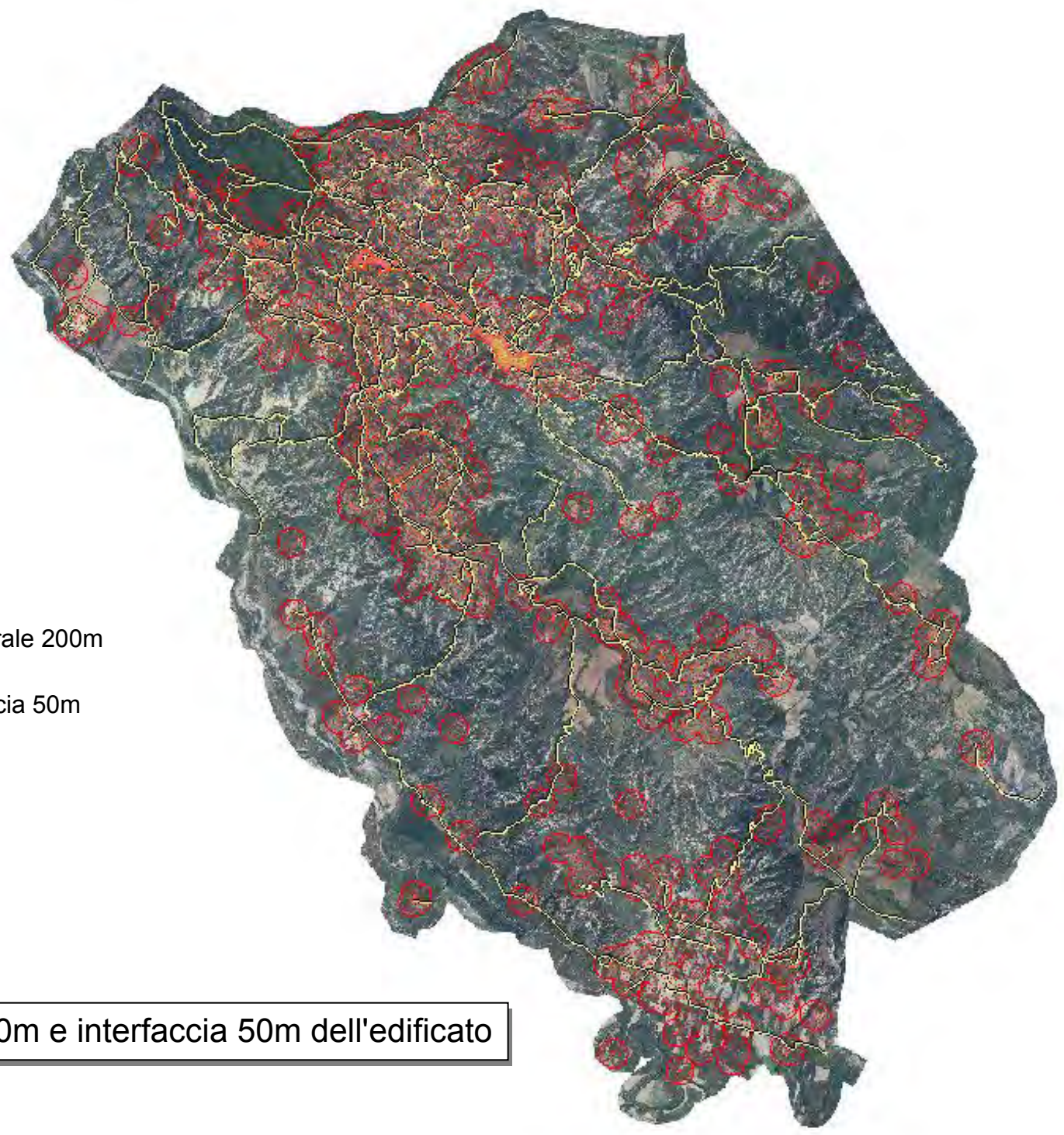
ANALISI DEL RISCHIO DELLA VIABILITÀ

 Perimetrazione 200m

Perimetrazione a 200m della rete viaria



-  Perimetrale 200m
-  Interfaccia 50m



Perimetrazione a 200m e interfaccia 50m dell'edificato